

Boston

6,5x25x1 Brick



Downtown
NB6501 ■ T133



West
NB6502 ■ T133



East-North
NB6504 ■ T133



South
NB6505 ■ T133

11x22,5x1



Downtown
NB1101 ■ T063



West
NB1102 ■ T063



East
NB1103 ■ T063



North
NB1104 ■ T063



South
NB1105 ■ T063

22,5x45x1



Downtown
NB4501 ■ T030



West
NB4502 ■ T030



East
NB4503 ■ T030



North
NB4504 ■ T030

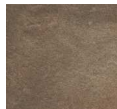


South
NB4505 ■ T030

22,5x22,5x1



Downtown
NB2201 ■ T030



West
NB2202 ■ T030



East
NB2203 ■ T030



North
NB2204 ■ T030

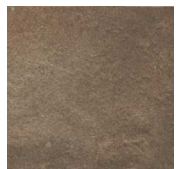


South
NB2205 ■ T030

36x36x1



Downtown
NB3601 ■ T063



West
NB3602 ■ T063



East
NB3603 ■ T063



North
NB3604 ■ T063



South
NB3605 ■ T063

Hex 28,5x32,5x1



Downtown
NB2801 ■ T133



West
NB2802 ■ T133



East
NB2803 ■ T133



North
NB2804 ■ T133



South
NB2805 ■ T133

Hex 36x41,5x1



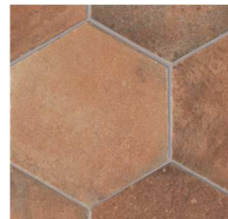
Downtown
NB4101 ■ T090



West
NB4102 ■ T090



East
NB4103 ■ T090



North
NB4104 ■ T090

Boston	Besteleenheid	st./m ²	kg./m ²	m ² /pallet	Pak/pallet	Toepassing	Oppervlak
6,5x25x1	27 st./0,44 m ²	62	18,2	77,44	176	PEI4 R11	Mat, Gemêleerd
11x22,5x1	20 st./0,50 m ²	40	20,8	72	144	PEI4 R11	Mat, Gemêleerd
22,5x45x1	10 st./1,01 m ²	9,99	21,1	72,72	72	PEI4 R11	Mat, Gemêleerd
22,5x22,5x1	20 st./1,01 m ²	19,98	20,7	72,72	72	PEI4 R11	Mat, Gemêleerd
36x36x1	8 st./1,00 m ²	8	20,6	48	48	PEI4 R11	Mat, Gemêleerd
28,5x32,5x1 Hexagon	15 st./1,05 m ²	14,29	18,2	48,3	48	PEI4 R11	Mat, Gemêleerd
36x41,5x1 Hexagon	9 st./1,00 m ²	9	22,6	48	48	PEI4 R11	Mat, Gemêleerd